

Claire Hope hopecl@vcu.edu

Cooper-Cabell Library's Special Collections and Archives.

[Virginia Commonwealth University](#)

901 Park Ave

Richmond, VA 23284

(804) 828-1108

© 2010 Virginia Commonwealth University

NAVY BLUE TWO - PIECE UNIFORM
(Cotton such as Indian Head. Rayon twill may be substituted.)

Page 1

1. Sew side seams of collar on left side, turn over to right side.
2. Join center front, center back, and side seams of skirt together and sew, (leaving left side of garment open until notch for placket).
3. Pin front and back shoulder seams together, stitch on stitching lines of left side. Turn garment over to right side and with front seam allowance facing back and covering back seam allowance edge-stitch seam down 1/8 inch from stitched seam.
4. Turn top garment to left side again, turn front shoulder seam allowance under 1/4 inch and edge-stitch right near edge. At this point the shoulder seams should be clean finished on right and left sides, with two rows of stitching showing on right side of garment.
5. Stitch front and back neck facings together at shoulder seam.
6. Stitch placket together lengthwise, 1/4 inch away from edge.
7. Stitch cuffs and turn on left side, matching side seams after folding. Leave opening in skirtband for insertion of skirt, and on sleeve for insertion of sleeve. Turn skirtband and cuffs over to right side, manipulating fabric with pin so corners come out sharp and pointed.
8. Take all stitched pieces and iron. Iron flat - collar, cuffs, skirtband, placket. Iron open - shoulder seams of neck facings, skirt seams.
9. With right side of fabric facing up, turn under 1/4 inch at outside of neck facing. Stitch down near edge on right side.
10. Put stay stitch at raw edge of collar to hold two edges together. Slash neckline of garment and neckline facing to within a generous 1/8 inch of neckline seam. Pin collar to right side of garment at neckline, stitch together.
11. Pin right side of neckline facing to collar, matching shoulder seams. Pin center front of facing to center front of garment.
12. Stitch together on previous stitching line joining collar to garment and continue from collar into slash opening of neckline.
13. Cut away all excess above 1/4 inch seam allowance at neckline. Turn over and iron slash opening, and rest of neckline seam.
14. Run easing stitch around armholes of sleeve between front and back notches. Pin sleeve to garment armhole, matching seamlines and notches at shoulder seam and back. Finish seam off same way as shoulder seam, end result two rows of stitching on right side. Press armhole seam flat.
15. Pin back and front side seams of garment top together, continuing into sleeve until notch for sleeve opening.
16. Finish side seams same as shoulder seams. Again two rows of stitching should show on right side.
17. At sleeve opening fold under (doubled) seam allowance 1/4 inch and stitch near edge for clean finish.
18. Fold outside edges of pleat to center of pleat, for all sleeve pleats, to bring sleeve to cuff measurement.
19. Pin right side of single thickness of fabric of cuff to left side of fabric of sleeve, matching notches so that cuff extension is on back part of sleeve.
20. Turn under seam allowance of outside of cuff and enclosing sleeve, top-stitch near edge all around cuff.
21. With right side of garment top up, turn under 1/4 inch of hem and edgestitch.
22. Turn hem back, iron. Hem by hand.
23. Join zipper to placket, insert at left side zipper opening of skirt (or finish placket as done on originals with snaps or hooks and eyes).
24. Join skirtband to waistline of skirt in same manner as cuff is joined to sleeve. Edgestitch all around skirtband.
25. With right side of skirt facing up, fold under 1/4 inch of hem and edgestitch.
26. Turn up hem, iron. Hem by hand.
27. Give garment final pressing.
28. Sew hooks and eyes to close skirtband above placket. Sew snaps on cuffs.

POWDER BLUE TIE for NAVY BLUE UNIFORM
(Cotton Percale)

1. Sew center back seam together and finish as in shoulder seam.
 2. Double under and edge-stitch all raw edges.
-
-

NOTE: 1. *Most girls wore big hair bows, tying the ribbon at the back of the head. A few tied them on the left side or right at the top of the head.*

2. *The girls in those days wore high button shoes. Probably most of our girls' feet are too big to fit in antique shoes that are around. They might make puttees or gaiters of plastic to wear over their "flats".*



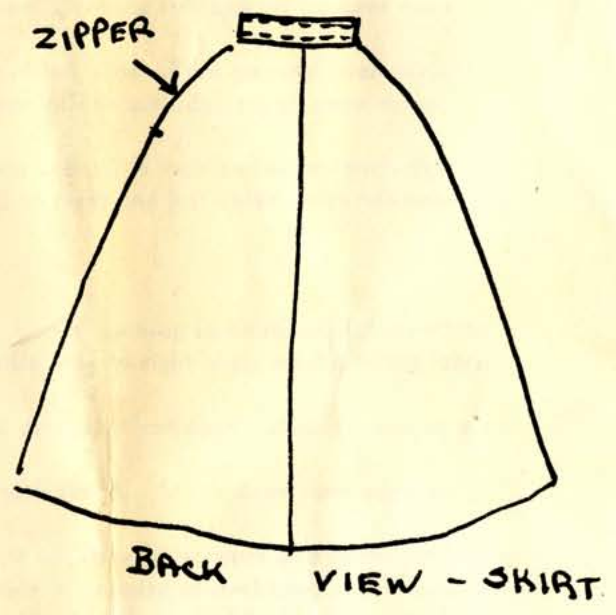
SKIRT BELT →

ORIGINALS HAD SNAPS AND/OR HOOKS AND EYES.

PLACKET

ZIPPER OPENING

LEFT SIDE



UNIFORM
YARDAGE - 4 1/2 YARDS

POWDER BLUE
TIE
2/3 YARD

BACK VIEW

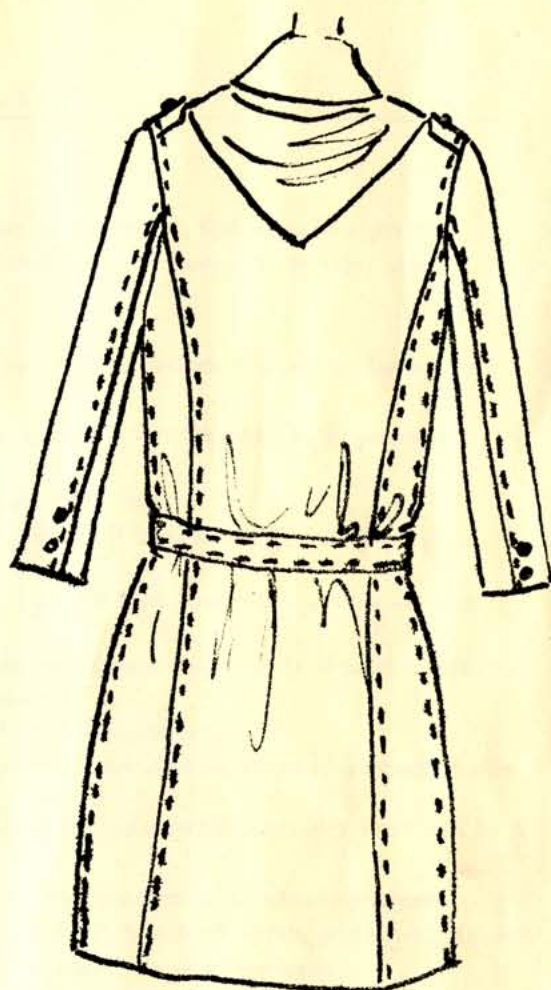
2 PIECE NAVY UNIFORM (COTTON SUCH AS INDIAN HEAD)

KHAKI ONE-PIECE UNIFORM
(Cotton Gabardine or Lightweight Twill)

1. Sew side seams of collar together on left side, turn over.
2. Sew belt together on left side leaving 1 inch opening in center of belt for turnover. Turn over to right side.
3. Sew shoulder flaps together on left side (leaving curved shoulder armhole open). Turn over to right side.
4. Iron all pieces assembled.
5. Top-stitch belt and shoulder flaps 1/8 inch from edge.
6. Join left side of pocket to right side of pocket facing. Fold facing over and top-stitch V-shape of facing on all four pockets 1/8 inch from edge.
7. Iron 1/2 inch seam allowance of three remaining sides of pockets back, and top-stitch pockets to garment 1/8 inch away from edge.
8. Double over 1/4 inch of outside edges of front facings and stitch down. Iron flat.
9. Join front seam of facing to front seam of garment. Iron down. Top-stitch 1/8 inch from edge all the way from neckline to hem.
10. Sew shoulder seams together on left side, matching stitching lines. Turn garment over and facing front seam allowance towards back, top-stitch near edge.
11. Turn garment back to left side, turn shoulder seam under 1/4 inch and stitch near edge. This should result in a double row of stitching, about 1/4 inch apart, on right side of garment.
12. Sew single thickness of collar to garment, right side of collar to right side of garment.
13. Turn back seam allowance of open neckline of collar and top-stitch down to enclose neckline of garment inside collar.
14. Stitch shoulder flaps to garment at armholes making sure notch in center of flap matches shoulder seam and back portion of flap rests on back portion of garment.
15. Join center back of garment to side back sections, finishing seams off in same manner as shoulder seams.
16. Sew basting stitch around armhole of sleeve to ease in armhole from front notch to back notch, until measurement fits between garment armhole notches. Be sure to match notch at top of sleeve to shoulder seam.
17. Sew sleeve armhole to garment armhole matching front, back and shoulder notches. Finish seam same as shoulder seam.
18. Sew front and back underarms of garment and sleeve together in one operation. Finish same as shoulder seam.
19. Stitch back 1/4 inch at bottom of sleeve hem on right side of fabric, turn hem up.
20. Stitch back 1/4 inch at bottom of garment hem, easing in as stitched. Turn hem back, iron garment hem and sleeve hem. Hem by hand.
21. Cut two strips of fabric 2 1/2 inches long, 1 inch wide each. Fold 1 inch width in four, enclosing raw edges inside. Sew these narrow strips at each edge and stitch to garment at notch placements for hip belt, on top of side seams of garment.
22. Mark placement of buttons and buttonholes. Sew 30 line (1 inch) antique brass buttons down center front and on belt, 24 line (5/8 inch) matching antique brass buttons on pockets, shoulder flaps and at side of sleeves.
23. On a 1 1/2 inch square of khaki material trace the letters G S with border from the illustration. Embroider in black floss. Applique to the corners of the collar.

BLACK TIE
(Cotton Percale)

1. Double under and edge-stitch all raw edges.



BACK VIEW



Pattern for
embroidered
collar insignia

UNIFORM
YARDAGE - $4 \frac{2}{3}$ YARDS.

BLACK TIE
1 YARD.

1 PIECE KHAKI GABARDINE OR LIGHTWEIGHT TWILL