

# *Camp May Flather*

GIRL SCOUTS OF THE DISTRICT OF COLUMBIA, Inc.

STOKESVILLE, AUGUSTA COUNTY  
VIRGINIA



*A Mountain Camp  
for Girl Scouts*

1930

070427



MRS. ALMA L. KNOX  
4613 Knox Rd.  
College Park, MD  
20740-3429

## STAFF

<i>Director</i> .....	Dorothy E. Greene
<i>Associate Director</i> .....	H. Margaret Lea
<i>Dietetics</i> .....	Ruth W. Jemison
<i>Dietetics Assistant</i> .....	Lizinka Brown
<i>Health</i> .....	Emma H. Murray, R. N.
<i>Business Manager</i> .....	Margaret Browne
<i>Unit Camp Head</i> .....	Claribel Wheeler
<i>Unit Camp Head</i> .....	Kathleen Fishback
<i>Unit Camp Head</i> .....	Hazel Hart
<i>Unit Camp Head</i> .....	Margaret G. Haugen
<i>Campcraft</i> .....	Margaret Cunningham
<i>Naturalist</i> .....	Gerald Harris
<i>Pioneer Camp</i> .....	Marion Barrett
<i>Dramatics</i> .....	Eleanor Brady
<i>Waterfront</i> .....	Ida Hicks
<i>Handcrafts</i> .....	
<i>Music</i> .....	Ann B. Garrett

Assisted by eight other counsellors.

*Mail Address*—Camp May Flather, Stokesville, Augusta County, Virginia.

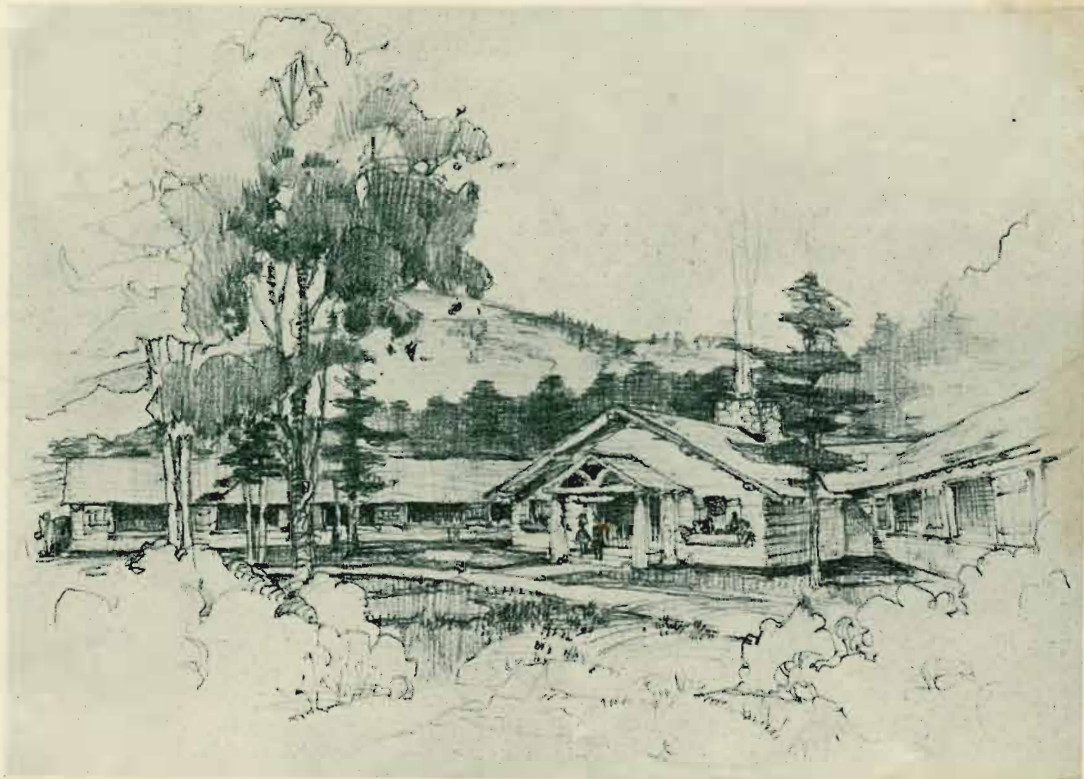
*Telephone*—Camp May Flather, Bridgewater, Virginia.

*Telegraph*—Camp May Flather, Harrisonburg, Virginia.

## LEADERS, PARENTS, TROOP COMMITTEE MEMBERS!

An opportunity to see camp and for leaders to receive a short Tramping and Trail-  
ing Course is offered June 25 to June 27.

Cost, including transportation, is \$5.90. The group will leave the Union Station,  
Washington, at 9:10 A. M., Wednesday, June 25, and returning will reach Washington  
at 8:55 P. M., Friday, June 27. Any adults interested in Girl Scouting may register  
for this period. The organization reserves the right to cancel this trip if there are not  
sufficient registrations by June 15.



MAIN DINING HALL, KITCHEN AND STORE ROOMS

Camp May Flather, which has been presented to the Girl Scouts of the District of Columbia, and to girl scouts for generations to come, will open its wide gates to welcome its first group of new owners on Monday, June 30.

Situated 20 miles southwest of Harrisonburg, Virginia, in the Shenandoah National Forest and on the Alleghany Range, a beautiful wild territory 30 by 150 miles, is available for the use of the camp. Mountain streams and miles of lumber roads and Indian trails stretch through the forest. The region is rich in Indian, pioneer and historic association and the cool climate offers a marked change from Washington summers.

Camp May Flather has been called one of the most perfectly situated and constructed girl scout camps in the country. The dining hall and lodge are of native river stone, log and slab construction. There are four separate camps for 24 campers and four leaders each, which are divided by age groups, and the pioneer camp is located a short distance from the main camp in a deep pine woods on the bank of North River.



## CAMP SESSIONS

There will be four, two week sessions, starting Monday, June 30, to July 14; July 14 to July 28; July 28 to August 11; August 11 to August 25. Campers may stay for more than one session, provided Registrations are not full by June 15.

## TUITION

Tuition is \$18.00 per session of two weeks, and the round trip fare from Washington is \$3.90. Of this \$21.90 total, \$5.00 is payable in advance with registration application. This deposit covers transportation and registration fee and cannot be refunded.

The camp Trading Post carries Girl Scout supplies, toilet articles and other small equipment.

## TRANSPORTATION

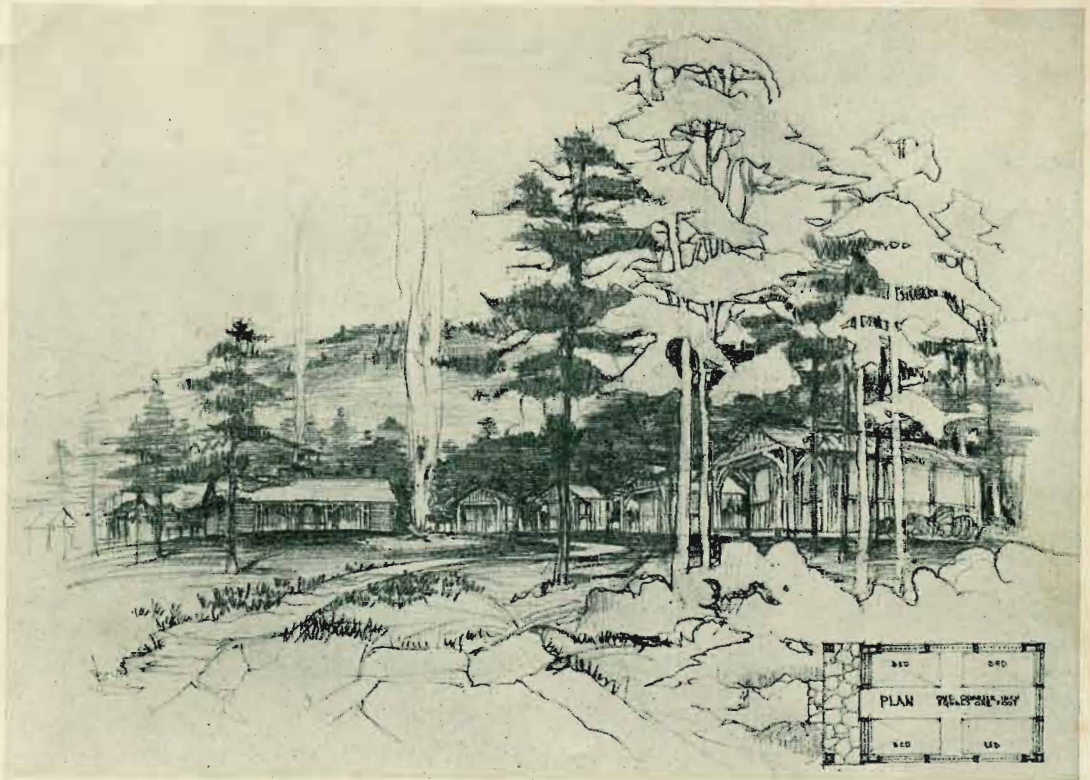
Chartered cars leave the Union Station, Washington, on the Southern Railway, at 9:10 A. M., June 30, July 14, July 28 and August 11. Returning groups reach the Union Station at 8:55 P. M. on July 14, July 28, August 11 and August 25. Cars are switched over the Chesapeake & Western to Stokesville, one mile from camp. Each group is chaperoned.

Box luncheons are delivered in the cars at Strasburg, Va., at a cost of 40 cents, or girls can bring their own luncheons.

Parents are requested not to bring their children to camp.

## HEALTH CERTIFICATE

Upon registration each camper will be given an appointment for a health examination, which will be given within one week before coming to camp.



SKETCH OF A TROUP UNIT SHOWING SLEEPING CABINS WITH LOG TROUP HOUSE IN CENTER.

## PROGRAM

The camp is planned by each unit of twenty-four girls through its Court of Honor. Each unit is a separate camp and will arrange its activities according to its interests. Two or three times a week the entire camp will come together for evening campfire.

With the camp surrounded by a wealth of natural resources the site offers a rare opportunity for woodcraft, mountain handcrafts, trail trips and forestry.

Woodcraft includes a progressive plan of: 1. Instruction in Main Camp. 2. Five days in the Deep Woods Camp, where campers live in Adirondack lean-to's. 3. Overnight trail trips. 4. Two-day trail trips. Horseback trail trips for the experienced woodcrafters may materialize for this year if the cost is not prohibitive.

Handcrafts will include a variety of projects suitable to the region. A mountaineer whose family for generations have made White Oak splint baskets will be in camp to help us find White Oaks, split and peel them, and make them into Indian pack baskets, waste baskets, and firewood baskets. We will make furniture for our log cabins, corn husk door mats, road signs, and many other things.

Forestry is the name we are giving nature study. We will have a Forester with us who will show us our way about in the mountains, weather signs, how to tell direction by stars, what the different



woods may be used for and how to preserve the trees, about the animals who live in the forest, what barks, roots, and buds are edible, and how to protect ourselves from the insects.

Swimmers will find a clear rock pool waiting for them and those who are not yet swimmers have another shallow pool.

Dramatics will probably center about the outdoor theatre, situated near the main lodge. Wide stone terraces on the hill top form the seats which command a view of the mountains above the leafy background of the stage. A dedication pageant will be given early in the season and another pageant near the close of camp.

In addition to group singing, music will include an orchestra. Every girl who plays any kind of instrument should bring it. Camp can provide safe and dry storage.

Swimming is closely supervised. A registered nurse is a resident in the camp and a dietitian and assistant dietitian are in charge of food. The water supply is tested. Pasteurized milk is used and all sanitary aspects of the camp are as perfect as it is possible to make them. Twenty-five trained adults compose the staff.

### CAMP UNIFORM

The camp uniform consists of an especially designed short which flares, is four inches from the knee and has an inside bloomer. This is worn with a middie, both pieces being in the official Girl Scout green. It can be purchased only from Hecht Co., price \$1.95 to 14 years, \$2.95 over 14 years.

Dark green wool knickers and sweater, jacket or coat for cold weather. Dark green beret. Knickers can be purchased from Garfinckel & Co., Sweaters from Hecht or Garfinckel.

*This uniform is not required*, but each camper should have at least one short and middie outfit if possible.

### BRING WITH YOU

*Scouter badge*

Three or more wash uniforms or other camp togs. ✓

Camp tie (special color sold at Trading Post).

Wool knickers or bloomers. ✓

Beret. ✓

Sweater, windbreaker or coat. ✓

Rubbers and raincoat. ✓

One pair knee-high shoes, pair oxfords, low heels. ✓

*High shoes can be purchased at the Sears-Roebuck Washington store. Style 15V2019. Price, \$5.00.*

Four pairs heavy stockings, two pairs of wool. ✓

Pajamas, bathrobe, ~~slippers~~. ✓

Changes of underwear. Not silk. ✓

Toilet accessories, towels, face cloths. ✓

*At least* three heavy wool blankets. ✓

Sheets required. Pillow and cases if desired. ✓

Bathing suit, cap and ~~bathing shoes~~. ✓

Flashlight, sewing kit. ✓

### OPTIONAL EQUIPMENT

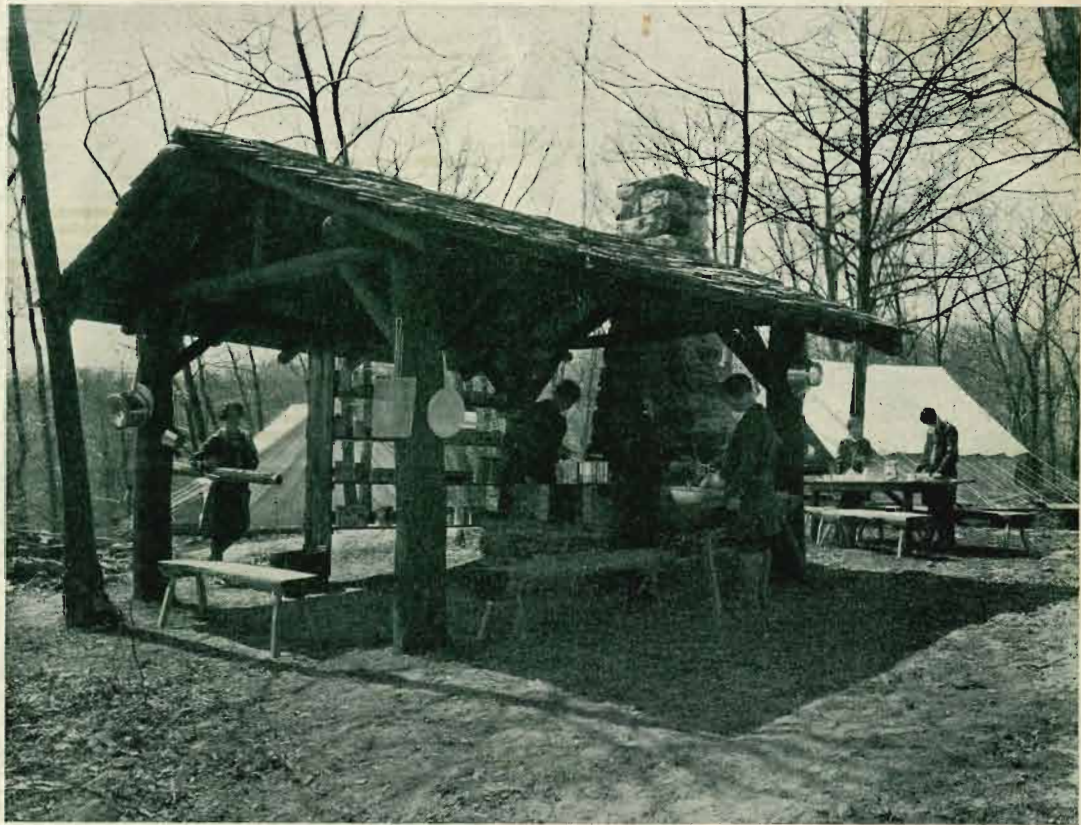
Camera and films.

Hand axe, Poncho, compass.

Costumes. *balloon*

Musical instruments (dry storage provided).

Any hiking equipment. *knife* ✓



AN OUTDOOR TROOP KITCHEN FOR EACH UNIT CAMP

**All campers should bring sufficient blankets, one pair of wool knickers and flannel nightclothes for health protection in rainy or cold weather.**

SEND BEDDING IN BLANKET ROLL; OTHER EQUIPMENT IN DUFFLE BAG OR SUITCASE. TRUNKS CANNOT BE TRANSPORTED TO CAMP.

If blankets or baggage is sent by Parcel Post they should be mailed well in advance of arrival, to

CAMP MAY FLATHER  
Stokesville—Augusta County, Va.

Campers should wear Girl Scout Uniform for travelling.

Each article brought to camp should be marked with camper's full name—either indelible ink or tape markers. Adhesive tape can be used for marking metal objects.

Laundry facilities are provided at camp or clothes and bedding can be sent to a steam laundry each week from camp.

#### CHURCH

Campers are taken each Sunday to the Catholic Church in Harrisonburg.

Members of Protestant Churches attend the Scouts' Own Service, conducted each Sunday morning at camp.

#### VISITORS

Visitors are welcome on Sundays from 11 A. M. to 4 P. M.

Camp should be advised in advance if guests wish to have dinner with the campers. The rate is 80 cents.





SKETCH MAP OF  
 PROPOSED DEVELOPMENT  
 OF THE  
 NORTH RIVER FOREST CAMP  
 FOR THE  
 WASHINGTON GIRL SCOUTS

- 'A' - TO BE BUILT THE 1<sup>ST</sup> YEAR
- 'B' - TO BE BUILT 1<sup>ST</sup> OR 2<sup>ND</sup> YEAR
- 'C' - TO BE BUILT 2<sup>ND</sup> YEAR